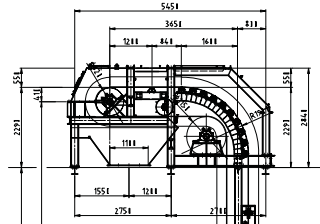
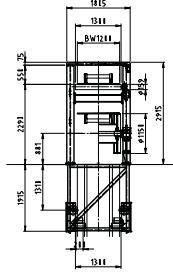
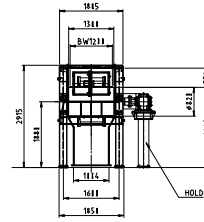


VIEW B

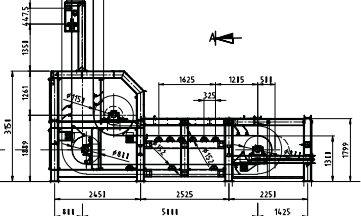
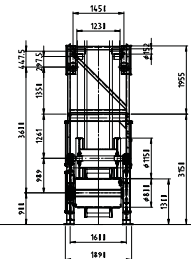


⤴



HOLD

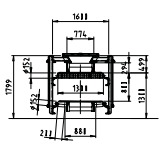
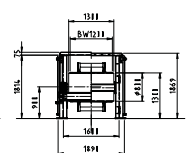
31011



⤴

⤴

SECTION A-A



Rev.	Revision description	Drawn	Checked	Date	By	File
1	Issue for production			2013/11/11		100
2	Issue for production			2013/11/11		100
3	Issue for production			2013/11/11		100
4	Issue for production			2013/11/11		100
5	Issue for production			2013/11/11		100
6	Issue for production			2013/11/11		100
7	Issue for production			2013/11/11		100
8	Issue for production			2013/11/11		100
9	Issue for production			2013/11/11		100
10	Issue for production			2013/11/11		100
11	Issue for production			2013/11/11		100
12	Issue for production			2013/11/11		100
13	Issue for production			2013/11/11		100
14	Issue for production			2013/11/11		100
15	Issue for production			2013/11/11		100
16	Issue for production			2013/11/11		100
17	Issue for production			2013/11/11		100
18	Issue for production			2013/11/11		100
19	Issue for production			2013/11/11		100
20	Issue for production			2013/11/11		100
21	Issue for production			2013/11/11		100
22	Issue for production			2013/11/11		100
23	Issue for production			2013/11/11		100
24	Issue for production			2013/11/11		100
25	Issue for production			2013/11/11		100
26	Issue for production			2013/11/11		100
27	Issue for production			2013/11/11		100
28	Issue for production			2013/11/11		100
29	Issue for production			2013/11/11		100
30	Issue for production			2013/11/11		100
31	Issue for production			2013/11/11		100
32	Issue for production			2013/11/11		100
33	Issue for production			2013/11/11		100
34	Issue for production			2013/11/11		100
35	Issue for production			2013/11/11		100
36	Issue for production			2013/11/11		100
37	Issue for production			2013/11/11		100
38	Issue for production			2013/11/11		100
39	Issue for production			2013/11/11		100
40	Issue for production			2013/11/11		100
41	Issue for production			2013/11/11		100
42	Issue for production			2013/11/11		100
43	Issue for production			2013/11/11		100
44	Issue for production			2013/11/11		100
45	Issue for production			2013/11/11		100
46	Issue for production			2013/11/11		100
47	Issue for production			2013/11/11		100
48	Issue for production			2013/11/11		100
49	Issue for production			2013/11/11		100
50	Issue for production			2013/11/11		100
51	Issue for production			2013/11/11		100
52	Issue for production			2013/11/11		100
53	Issue for production			2013/11/11		100
54	Issue for production			2013/11/11		100
55	Issue for production			2013/11/11		100
56	Issue for production			2013/11/11		100
57	Issue for production			2013/11/11		100
58	Issue for production			2013/11/11		100
59	Issue for production			2013/11/11		100
60	Issue for production			2013/11/11		100
61	Issue for production			2013/11/11		100
62	Issue for production			2013/11/11		100
63	Issue for production			2013/11/11		100
64	Issue for production			2013/11/11		100
65	Issue for production			2013/11/11		100
66	Issue for production			2013/11/11		100
67	Issue for production			2013/11/11		100
68	Issue for production			2013/11/11		100
69	Issue for production			2013/11/11		100
70	Issue for production			2013/11/11		100
71	Issue for production			2013/11/11		100
72	Issue for production			2013/11/11		100
73	Issue for production			2013/11/11		100
74	Issue for production			2013/11/11		100
75	Issue for production			2013/11/11		100
76	Issue for production			2013/11/11		100
77	Issue for production			2013/11/11		100
78	Issue for production			2013/11/11		100
79	Issue for production			2013/11/11		100
80	Issue for production			2013/11/11		100
81	Issue for production			2013/11/11		100
82	Issue for production			2013/11/11		100
83	Issue for production			2013/11/11		100
84	Issue for production			2013/11/11		100
85	Issue for production			2013/11/11		100
86	Issue for production			2013/11/11		100
87	Issue for production			2013/11/11		100
88	Issue for production			2013/11/11		100
89	Issue for production			2013/11/11		100
90	Issue for production			2013/11/11		100
91	Issue for production			2013/11/11		100
92	Issue for production			2013/11/11		100
93	Issue for production			2013/11/11		100
94	Issue for production			2013/11/11		100
95	Issue for production			2013/11/11		100
96	Issue for production			2013/11/11		100
97	Issue for production			2013/11/11		100
98	Issue for production			2013/11/11		100
99	Issue for production			2013/11/11		100
100	Issue for production			2013/11/11		100

151 BATEMAN FOR LETSENG DIAMONDS
 VERTICAL FLEXWELL CONVEYOR BM-021
 F110-FCV-151 Basic Engineering
 Drawing No. A08401
 Date: 2013/11/11
 Scale: 1:1
 Author: [Name]
 Designer: [Name]
 Checker: [Name]
 Approver: [Name]